



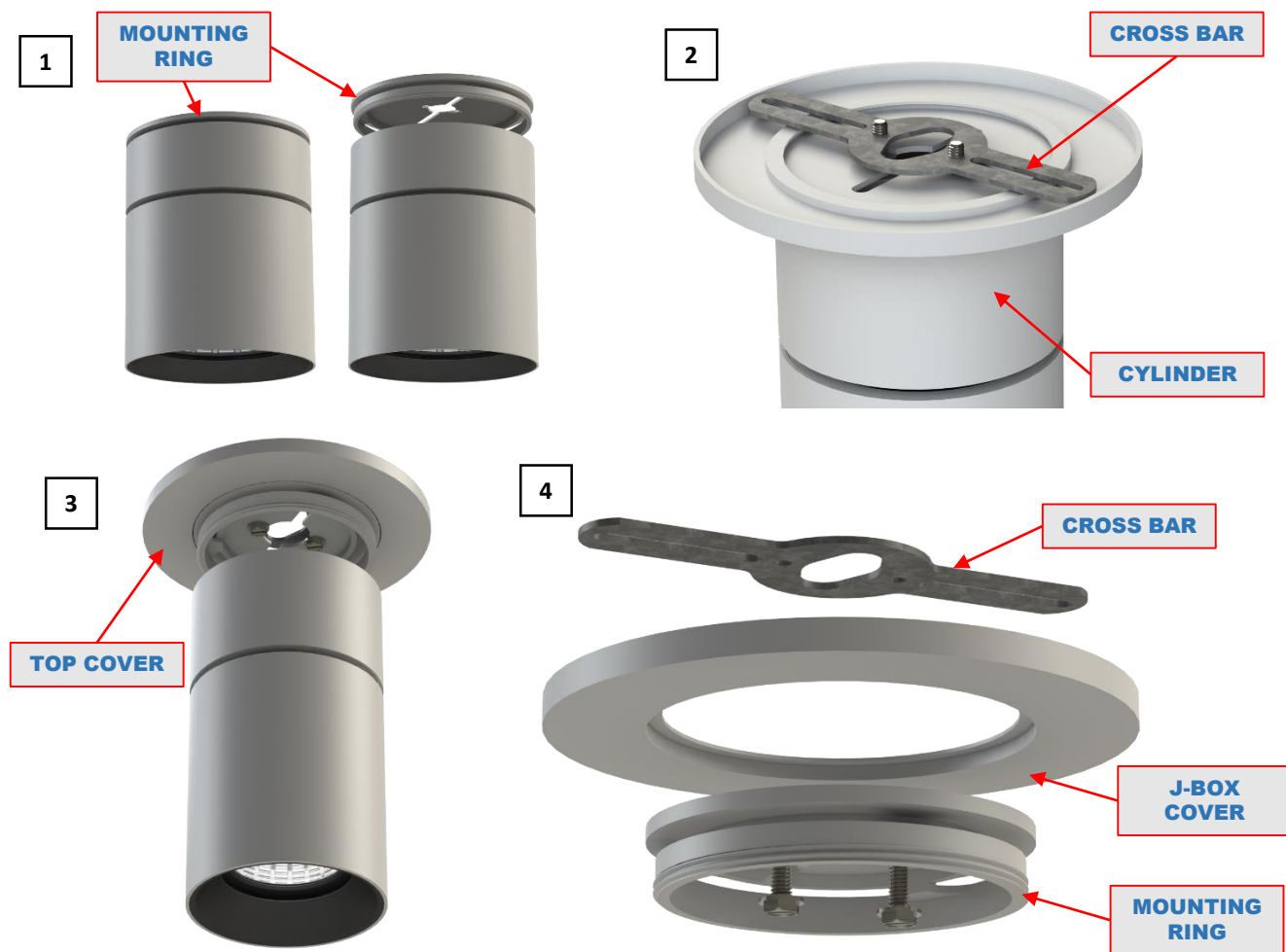
BONGO SERIES INSTALLATION INSTRUCTIONS

FOR INSTALLATION TO J-BOX



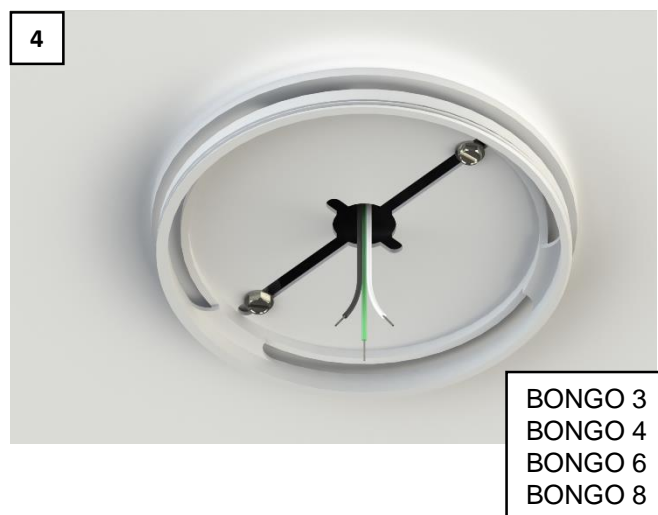
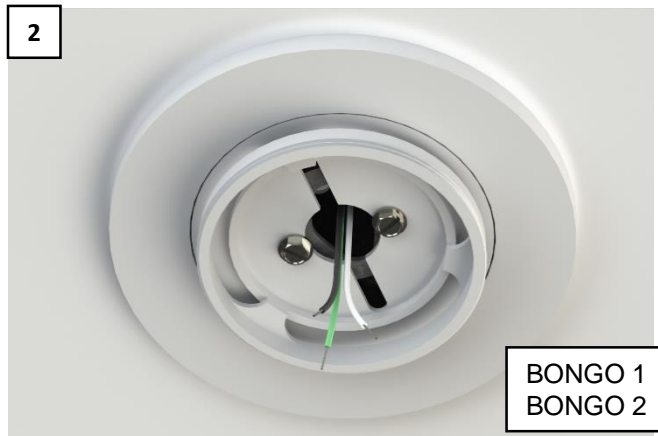
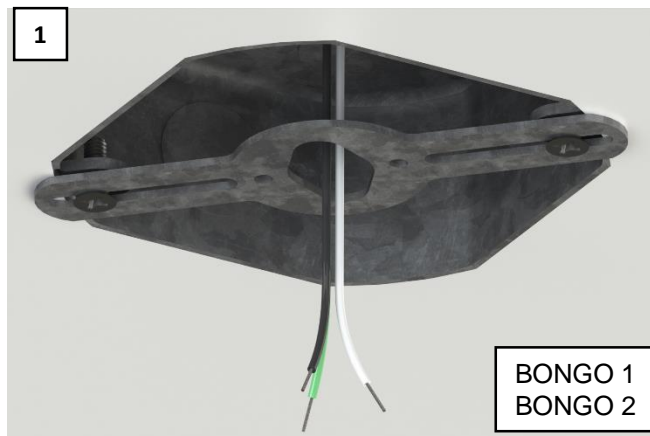
WARNING - RISK OF FIRE AND ELECTRICAL SHOCK. FIXTURE MUST BE INSTALLED BY A QUALIFIED ELECTRICIAN ONLY. FIXTURE IS INTENDED FOR INSTALLATION IN ACCORDANCE WITH THE NATIONAL ELECTRICAL CODE, LOCAL AND FEDERAL SPECIFICATIONS. DISCONNECT POWER AT ELECTRICAL PANEL BEFORE SERVICING. RETAIN THESE INSTRUCTIONS FOR MAINTENANCE REFERENCE.

FIXTURE PREPARATION



1. FOR LARGER BONGOS THAT DO NOT INCLUDE A J-BOX COVER, UN-SCREW THE MOUNTING RING FROM THE CYLINDER TO FINISH FIXTURE PREP. (FIGURE 1) IF YOUR FIXTURE DOES INCLUDE A J-BOX COVER, GO TO THE NEXT STEP.
2. SECURE THE CROSS BAR SIDE WITH ONE HAND, WHILE UN-SCREWING THE CYLINDER WITH THE OTHER. (FIGURE 2)
3. REMOVE THE 2 SCREWS FROM THE TOP COVER. PLACE THEM IN A SECURE PLACE FOR LATER USE. (FIGURE 3)
4. SEPARATE THE J-BOX COVER, THE CROSS BAR AND THE MOUNTING RING. THE J-BOX COVER AND THE CROSS BAR ARE USED FOR J-BOXES AND OPENINGS THAT ARE LARGER THAN THE DIAMETER OF THE FIXTURE. IF THE DIAMETER OF THE FIXTURE IS LARGER THAN THE J-BOX OR OPENING WHERE IT WILL BE INSTALLED, THE J-BOX COVER INSTALLATION IS OPTIONAL, OTHERWISE IT IS RECOMMENDED. (FIGURE 4)

FIXTURE INSTALLATION



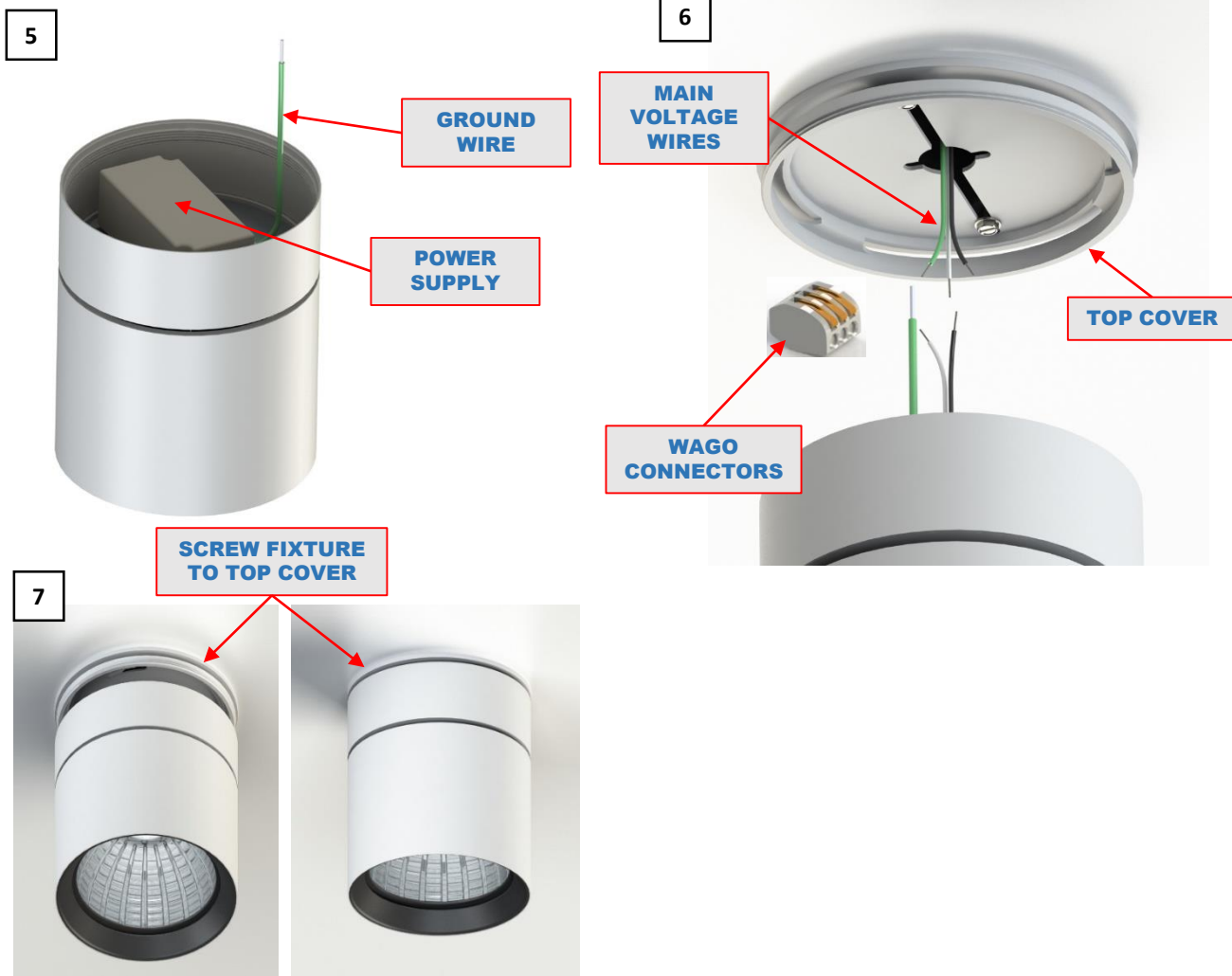
IF USING A J-BOX COVER:

1. ATTACH THE PROVIDED CROSSBAR TO THE J-BOX USING SCREWS PROVIDED BY OTHERS. RUN THE WIRES THROUGH THE MIDDLE OF THE CROSS BAR. (FIGURE 1)
2. PLACE THE J-BOX COVER FOLLOWED BY THE MOUNTING RING BELOW THE CROSS BAR AND SECURE WITH THE PROVIDED SCREWS TO THE CROSS BAR. (FIGURE 2)

IF NOT USING A J-BOX COVER:

1. PULL THE MAIN WIRES OUT OF THE J-BOX. (FIGURE 3)
2. ATTACH THE MOUNTING RING TO THE J-BOX USING SCREWS PROVIDED BY OTHERS. RUN THE WIRES THROUGH THE OPENING AS SHOWN. (FIGURE 4)

FIXTURE INSTALLATION



1. LOCATE THE GREEN GROUND, THE WHITE / BLUE NEUTRAL AND THE BLACK / BROWN HOT IN THE FIXTURE. (FIGURE 1)
2. CONNECT POWER SUPPLY TO MAIN POWER LINES. CONNECT THE GREEN WIRE FROM THE FIXTURE TO THE GROUND WIRE FROM THE MAINS. USING PROVIDED WAGO CONNECTORS, CONNECT THE BLUE / WHITE WIRE FROM POWER SUPPLY TO THE WHITE NEUTRAL WIRE FROM MAIN LINES AND FINALLY THE BROWN / BLACK WIRE FROM THE POWER SUPPLY TO THE BLACK HOT WIRE FROM THE MAIN LINES. PUSH EACH CONNECTION THROUGH THE OPENING ON THE MOUNTING BRACKET. SO THE WAGO CONNECTORS END UP IN THE J-BOX. (FIGURE 2)
3. FINALLY SCREW IN THE FIXTURE TO THE TOP COVER MOUNTED ON THE J-BOX. (FIGURE 3)
4. TURN POWER ON TO VERIFY THE FIXTURE WAS PROPERLY INSTALLED.